



VB-300 SERIES QUICKSTART GUIDE

CONTENTS

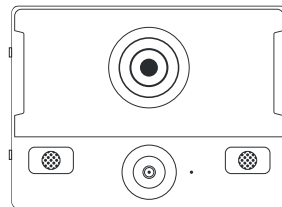
INTRODUCTION	3
CHARGING YOUR DEVICE	4
POWERING-UP YOUR DEVICE	6
POWERING-DOWN YOUR DEVICE	7
CONFIGURING YOUR DEVICE	8
IDENTIFYING AN RFID ASSIGNED BADGE	9
USING YOUR VIDEOBADGE VB-300	10
ACCESSORIES	12
REGULATORY INFORMATION	15

INTRODUCTION

Welcome, and thank you for choosing Edesix as your Body Worn Video provider.

This simple guide will lead you through the set-up process of your VB-300 device and all accompanying accessories.

Your VideoBadge VB-300 will be one of two variants;



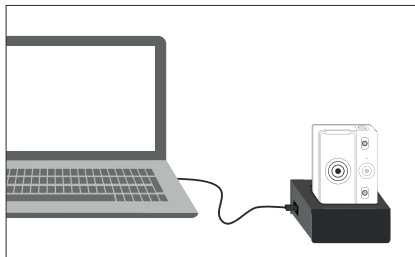
VB-320W		VB-340W	
<ul style="list-style-type: none"> • With streaming 	<ul style="list-style-type: none"> • Slimline battery 	<ul style="list-style-type: none"> • With streaming 	<ul style="list-style-type: none"> • Extended battery

CHARGING YOUR DEVICE

Upon receiving your VB-300 Series VideoBadge, it is recommended that you fully charge the device before usage. To enable charging you will require one of the following:

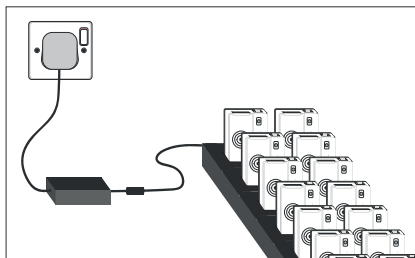
Solo Docking Station (VB-300-SOLO)

- ➔ Connected to your laptop or PC



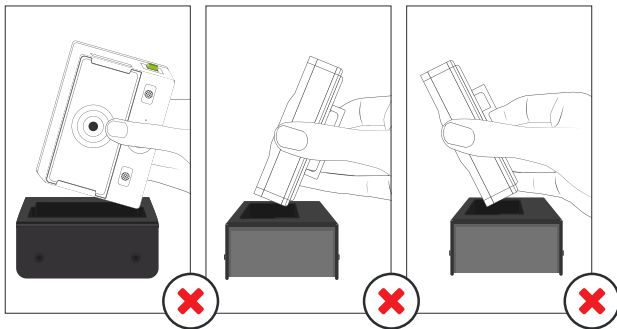
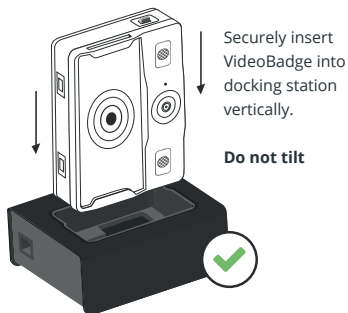
14 Port Docking Station (VB-300-DOCK14)

- ➔ Connected to a power supply



Please note: Your VB-300 series camera can also be charged using a USB directly connected to the VideoBadge.

When charging using a Solo or 14 Port docking station, rotate the camera and insert into the dock as shown in the diagram.

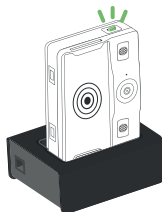


Once situated in the charging position, your VideoBadge will beep to indicate charging has commenced, and the LED, as indicated, will flash green to show charging.

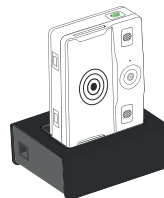
Once fully charged, the same LED will turn solid green. If the LED is not lit, the device is not charging.

Your VideoBadge will fully charge within 4 hours (VB-320) and 8 hours (VB-340).

Charging
Flashing green light



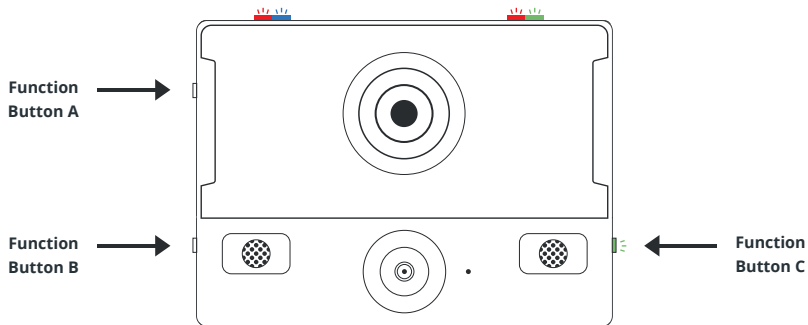
Fully Charged
Solid green light



POWERING-UP YOUR DEVICE

Powering-up your VB-300 is simple. To do so, press **any button** on the device.

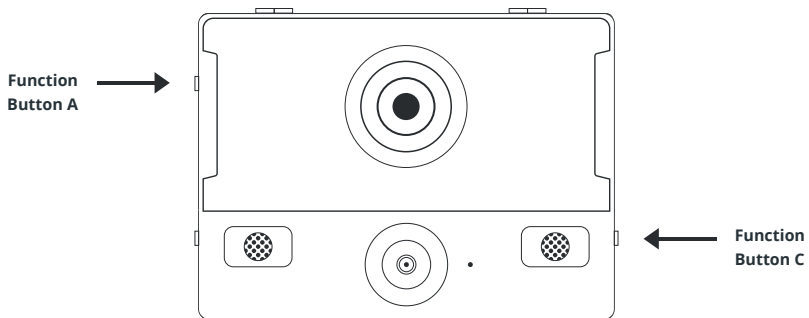
In doing so, all LED's on the VB-300 will flash simultaneously.



POWERING-DOWN YOUR DEVICE

Powering-down your VB-300 is slightly different. To do so, you should press Function button A and Function button C as shown in the diagram.

The user should press once, and should not hold down the buttons.



CONFIGURING YOUR DEVICE

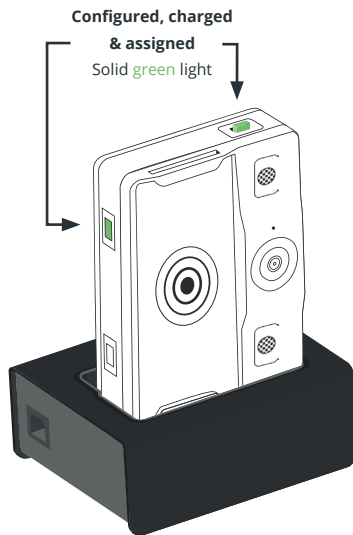
Prior to using your VB-300 Series VideoBadge, your device must be configured and assigned to you using VideoManager. For detailed information on how to configure your device, please refer to the VideoManager User Guide.

Each VideoBadge requires a valid VideoManager Licence, or access to the Edesix Cloud Service, in order for you to assign devices and access footage.

For further details, see the VideoManager User Guide

To ascertain whether your VideoBadge has been configured, please view the top left LED on your device.

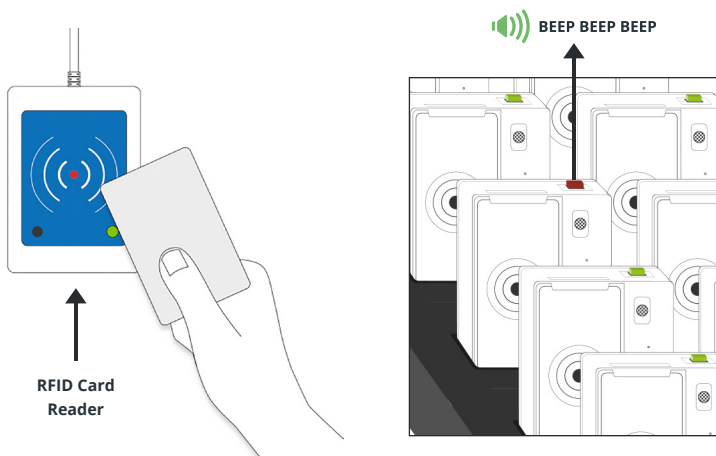
This LED will turn solid green once configured and assigned. Your VideoBadge is charged, assigned and ready to use when the LED's shown are both solid green.



IDENTIFYING AN RFID ASSIGNED BADGE

Once your device is configured, you may wish badge users to utilize an RFID system for badge assignment. For further information on using RFID with your VB-300, please refer to the VideoManager User Guide.

Having presented your RFID card, your docked, assigned VB-300 will identify itself with a solid red LED as shown.

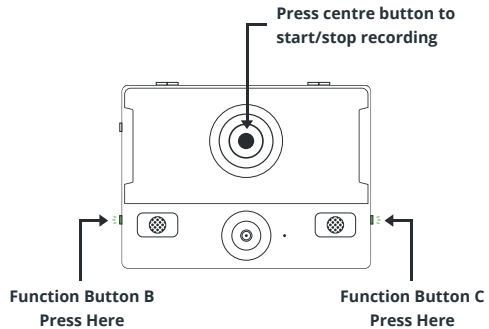


USING YOUR VIDEOBADGE VB-300

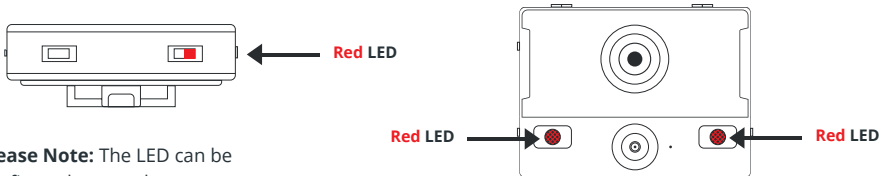
The Edesix VB-300 series of badges are intuitive and simple to use.

To Start / Stop recording (Configurable)

Two buttons situated on either side of your device, when pressed simultaneously, will begin recording. The same action will stop recording. Alternatively users can activate or deactivate recording by pressing on the single front button located in the centre of the badge, above the camera lens as shown. Administrators can configure each badge to allow either or both of these start/stop activations.

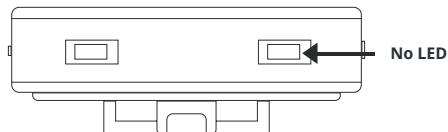


Start Recording initiated will be indicated by a short bleep, the top right LED showing red and (if configured by an administrator) the two front LEDs showing red.



Please Note: The LED can be configured not to glow.

Stop Recording initiated will be visual through the top right and front LEDs turning from red to off, accompanied by a longer, high pitched bleep.



To quickly understand the current power status of your VideoBadge, you should refer to the top left LED as shown below.

Power – LED will show solid green when the badge on

Stand-by – LED will flash green when badge is in stand-by mode (*LED can be configured not to flash in Stand-by Mode*)

Low Power – LED will show red when power has < 15 minutes remaining



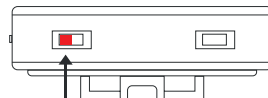
Power

Solid green light



Stand-by

Flashing green light



Low Power

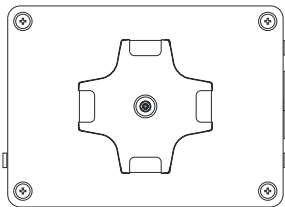
Solid red light

ACCESSORIES

Your VB-300 will come fitted with a Quick Release Base (VB-300-HP-QR) or a Crocodile (VB-300-HP-CROC) or Alligator Clip (VB-300-HP-ALIG) as shown.

Quick Release Base

For use with Klick Fast and Sports Camera Quick Release parts.

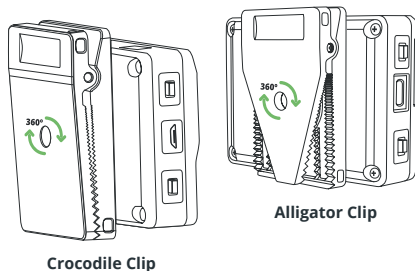


Crocodile & Alligator Uniform Clip

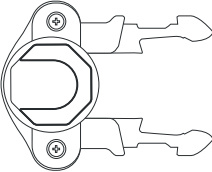
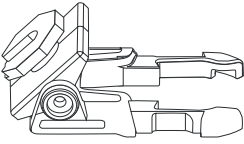
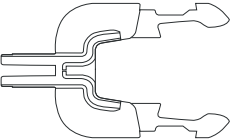
Attaches to back of VideoBadge.

360° rotation for use with left or right hand shirt opening, chest pocket or belt.

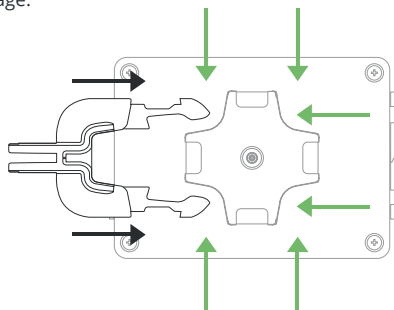
Please note: When docking your VB-300 with the Crocodile or Alligator Clip attached, the clip should be rotated horizontally, to allow docking.



There are three options of Quick Release fittings for your VB-300:

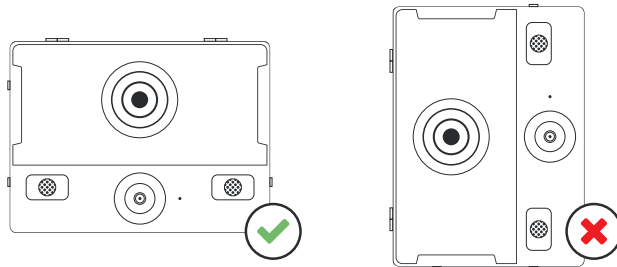
<p>Klick Fast Stud (VB-300-QR-KFSTUD)</p>	<p>Tilting Klick Fast (VB-300-QR-KFTILT)</p>	<p>Sports Camera Pillar (VB-300-QR-SPORT)</p>
		

To use any of the above, simply slide the fitting into the Quick Release Base on the back of your VB-300 as shown. The fitting can be attached to the Quick Release Base in any of 4 orientations to best suit your usage.



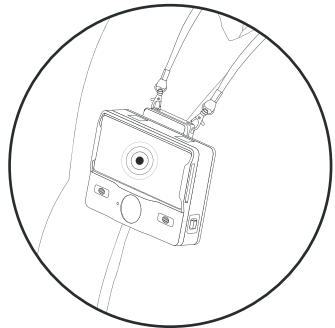
Please note: For further information on our suite of accessories to accompany your VB-300 Series camera, please refer to the VB-300 Fixings Spec Sheet.

Please note: The Camera should always remain upright when capturing footage. The Quick Release Base is easily removed using a screwdriver, to allow fitting of a Crocodile or Alligator Clip if required.



Lastly, your VB-300 can be fitted with a lanyard for easy wear. The lanyard should be attached to your VB-300 Crocodile or Alligator Clip as shown.

You should now be ready to use your VideoBadge! We hope that you enjoy using your new VB-300 Series camera. For further set-up information, please refer to the VideoBadge and VideoManager User Manuals.



REGULATORY INFORMATION - FCC COMPLIANCE INFORMATION STATEMENT

Product Name	Model
Edesix VideoBadge	VB-300
Edesix Dock	VB-300-DOCK14

have been tested and found to comply with the limits for Class B digital devices, pursuant to part 15 of the FCC Rules. These limits are designed to provide reasonable protection against harmful interference in a residential installation. This equipment generates and can radiate radio frequency energy and, if not installed and used in accordance with the instructions, may cause harmful interference to radio communications. However there is no guarantee that interference will not occur in a particular installation. If harmful interference is suspected, the user should determine its cause by turning the equipment off and on. The user is encouraged to try to correct the interference by one or more of the following measures:

- Reorient or relocate the receiving antenna.
- Increase the separation between the equipment and the receiver.
- Connect the equipment into an outlet on a circuit different from that to which the receiver is connected.
- Consult the supplier or an experienced radio/TV technician for help.

This device complies with the limits specified in part 15 of the FCC Rules. Operation is subject to the following two conditions: (1) This device may not cause harmful interference, and (2) this device must accept any interference received, including interference that may cause undesired operation.

Industry Canada Compliance Information Statement

Canada: CAN ICES-3 (B)/NMB-3(B)

This Class B digital apparatus complies with Canadian ICES-003.

Cet appareil numérique de la classe B est conforme à la norme NMB-003 du Canada.

RF Exposure Information (SAR)

The VB-300 contains a radio transmitter and receiver. It is designed and manufactured not to exceed the safe body worn human exposure limits for RF energy set by the Council of the European Union, the Federal Communications Commission (FCC) and Industry Canada (IC) for occupational exposure.

VB-320W and VB-340W contain FCC ID: XF6-RS9110N1102


Radio Equipment Directive

Hereby Edesix declares that the radio equipment type VB-300 is in compliance with Directive 2014/53/EU. The full text of the EU declaration of conformity is available at the following internet address: <https://www.edesix.com/videobadge-vb-300-declaration-of-conformity>

When WiFi is enabled, all models transmit in the frequency band 2.412 GHz to 2.472 GHz with a transmit power of no more than 97.72mW.



 +44 131 510 0232

 sales@edesix.com

 www.edesix.com

Reg: SC235672 | VAT: GB 803 904 251